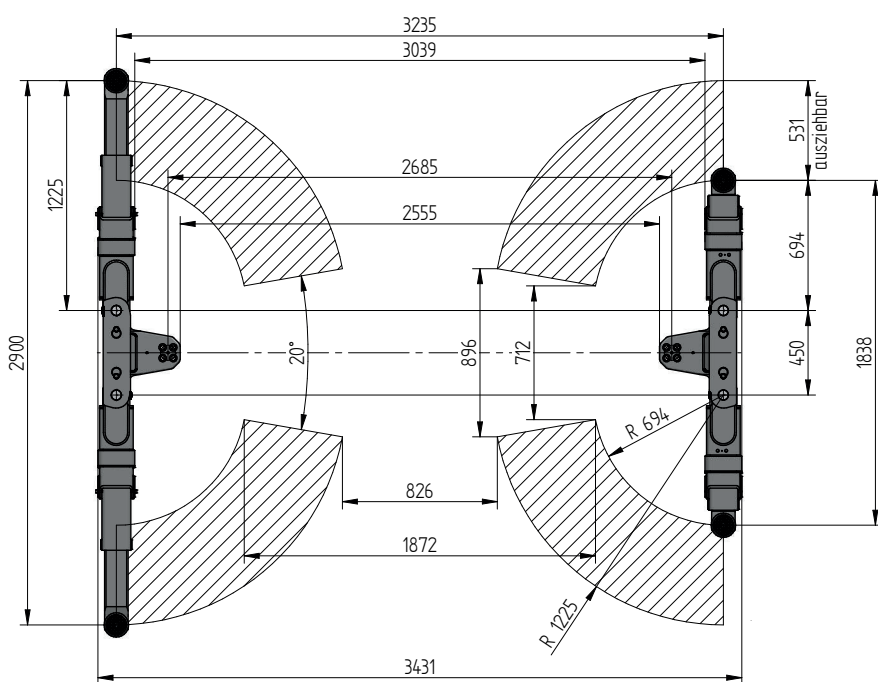
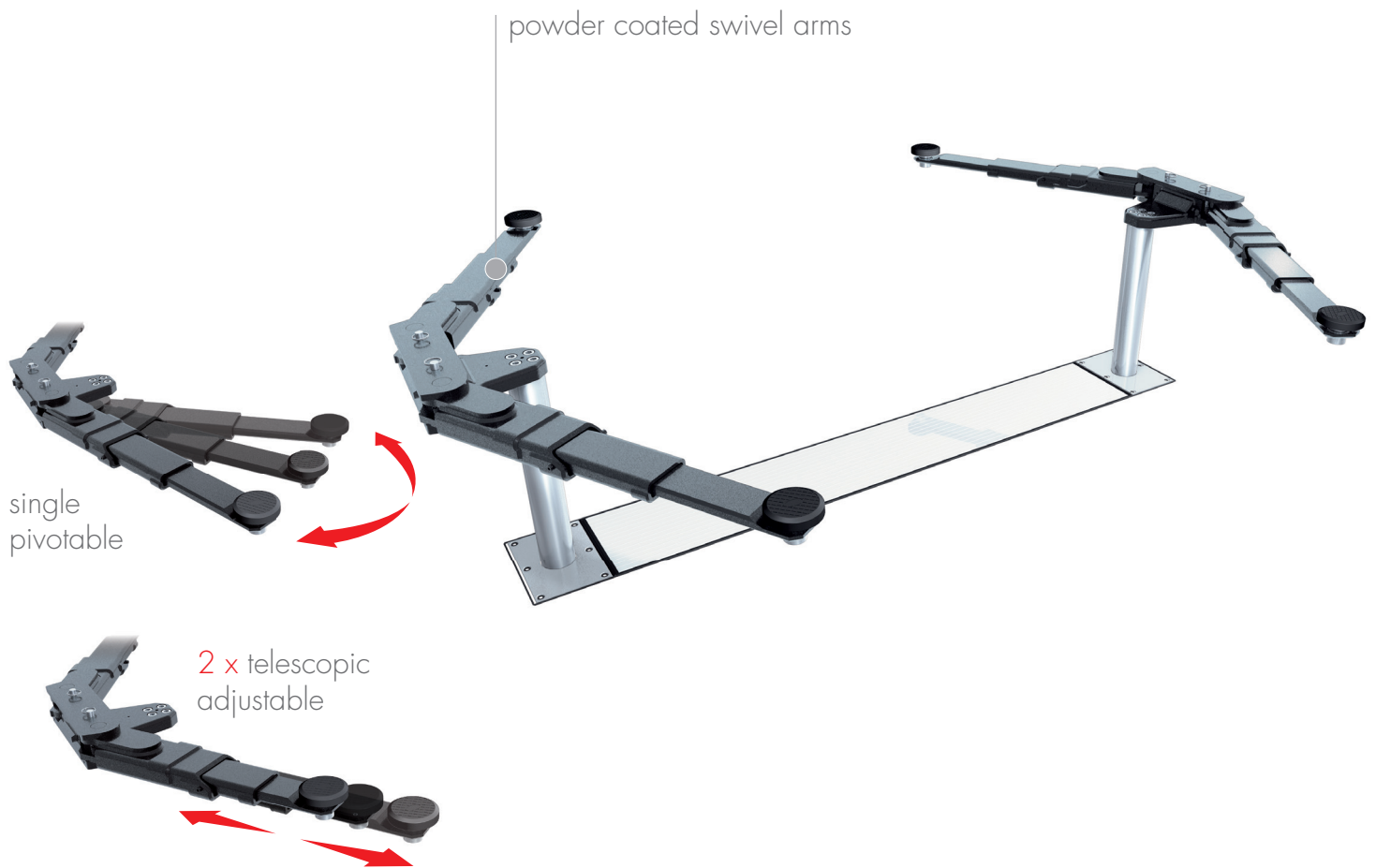


Swingarm 2.35-2685



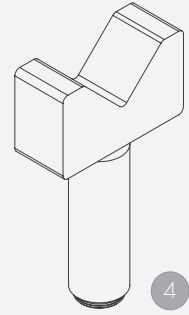
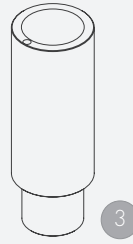
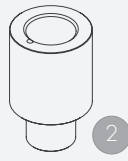
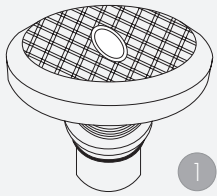
TECHNICAL DATA

capacity	3500 kg
effective raise height	2028 mm
move in height	90 mm
piston diameter	123 mm
piston distance	2685 mm
installation depth	2408 mm
motor output	3,0 kW
power connector	400 V/16 A
cable length to control	11 m
lifting time	≈ 35 sec.
lowering time	≈ 35 sec.

Support Swingarm 2.35 (M24)	109199
Installation cassette STEEL 2685 mm	2080XX
Installation cassette STEEL 2685 mm galvanized	2081XX
Lifting unit oil 4,0 2685 mm - K pre-assembled in installation cassette	107045
Lifting unit oil 4,0 2685 mm - H packed in wooden box	107756



Accessories

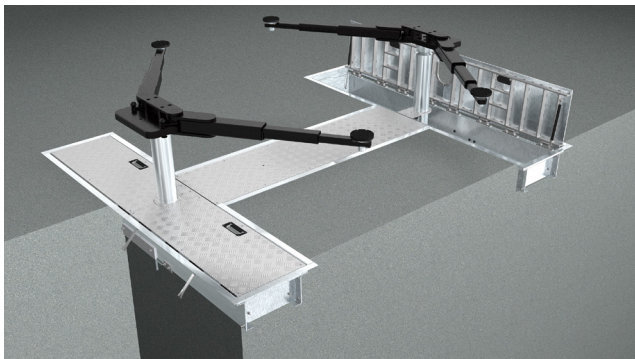


1 | Stacking adapter
d123 x d 50
109682 (1set / 4 pcs.)

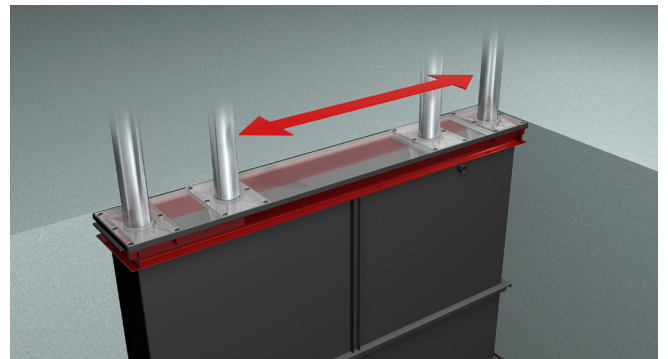
2 | Stacking adapter extension
89 mm
109679 (1set / 4 pcs.)

3 | Stacking adapter extension
127 mm
109680 (1set / 4 pcs.)

4 | Stacking adapter V-Prism
d 50 / 87-130 mm
109683 (1set / 2 pcs.)



Surround frame
hot-dip galvanized,
swivel arm lift pd 2685 mm
106620



Future Proof installation cassette
Steel 2685 mm,
drilling 2685/1785/1500
2620XX
Steel galvanized 2685 mm,
drilling 2685/1785/1500
2621XX



Herrmann AG
Bahnhofstrasse 32
D-93483 Pöding

Sales

Phone: +49 (0)9461/91388 50
Fax: +49 (0)9461/91388 33
E-Mail: sales@herrmann.de

Service

Phone: +49 (0)9461/91388 31
Fax: +49 (0)9461/91388 33
E-Mail: service@herrmann.de

www.herrmann.de